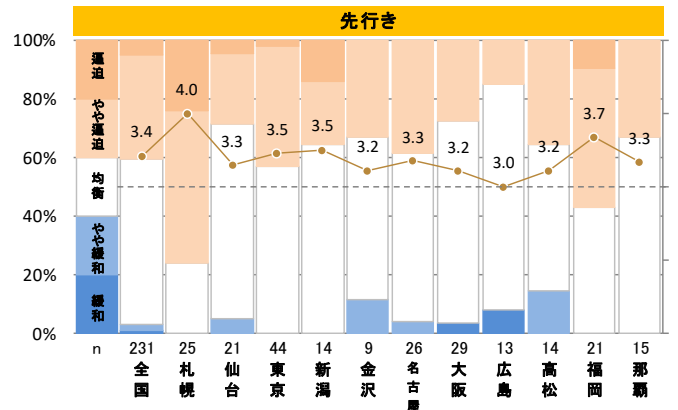
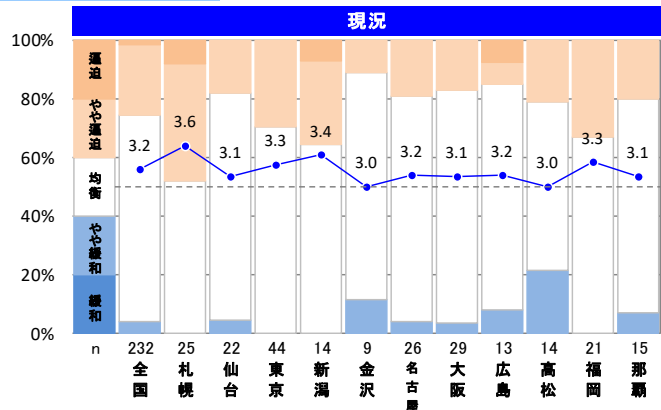
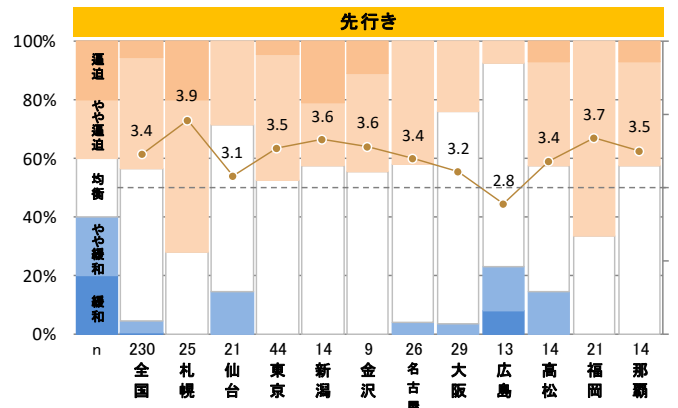
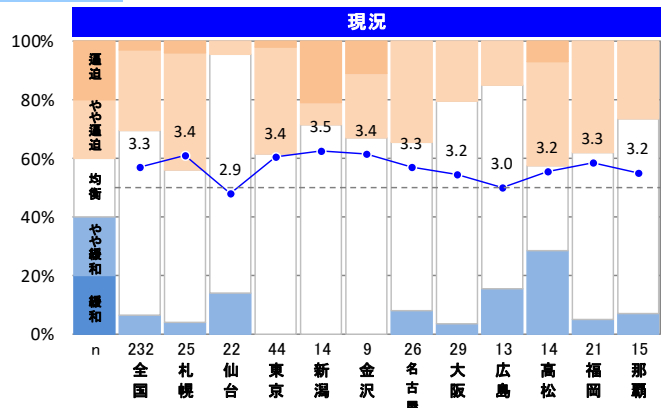


【工種別労務需給状況】地区別集計

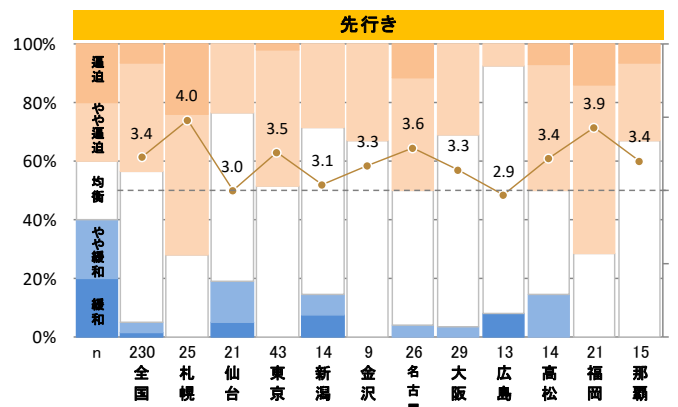
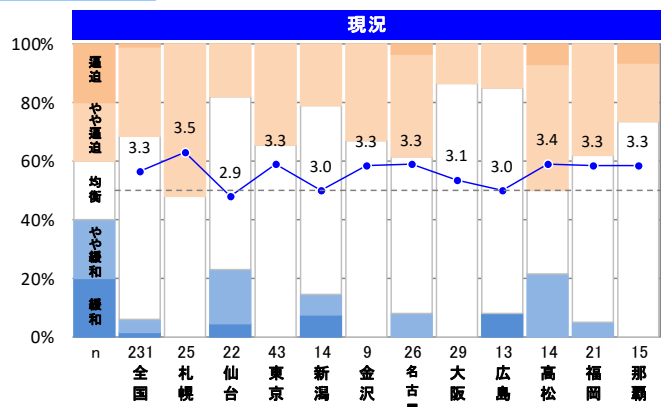
直接仮設工事



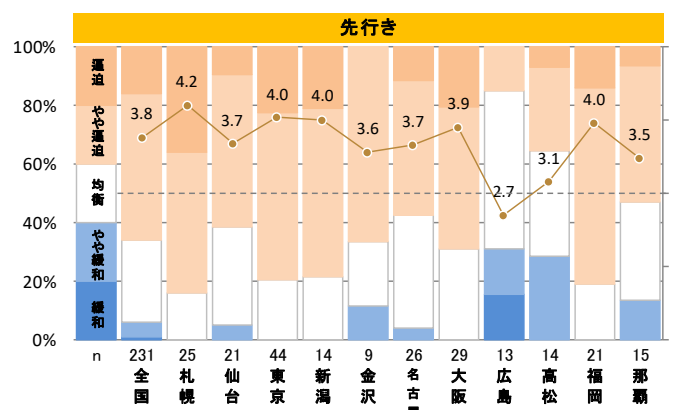
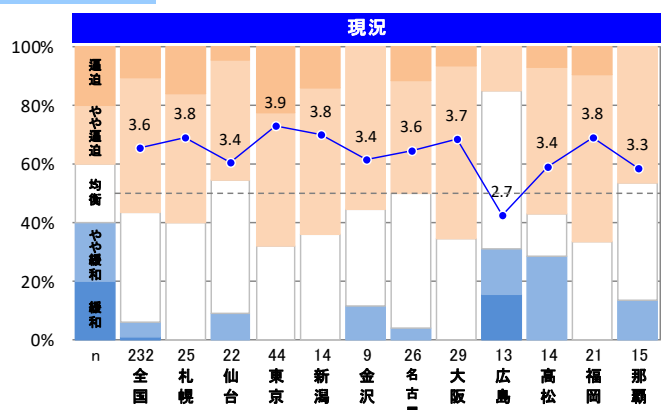
土工事



地業工事

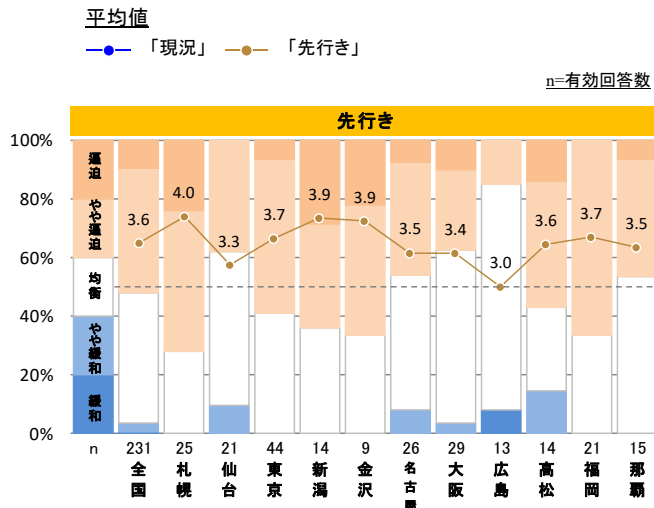
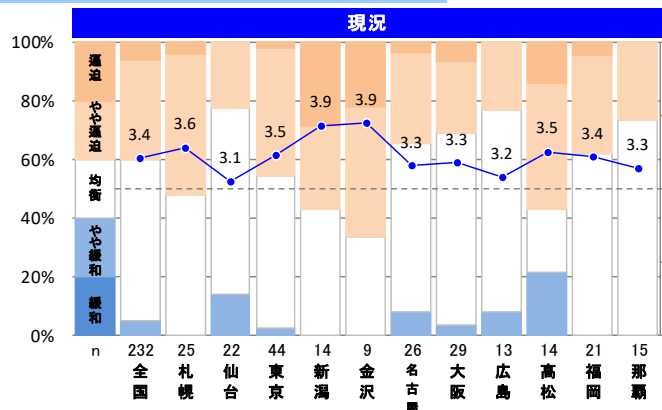


鉄筋工事

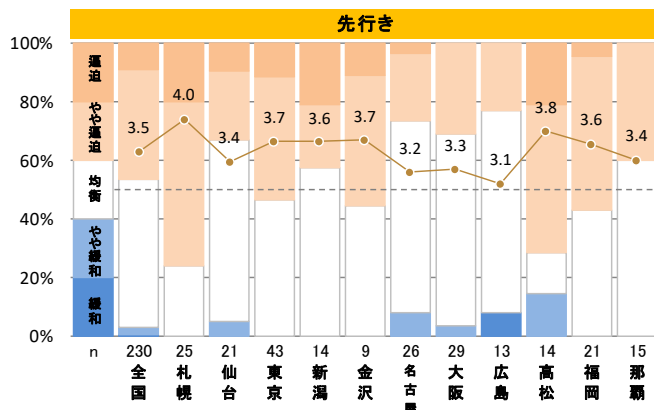
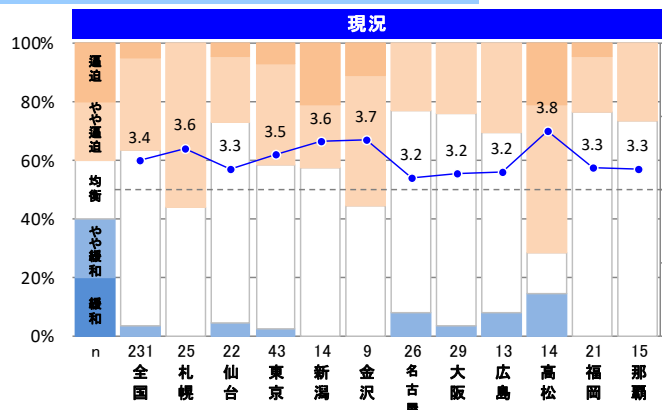


【工種別労務需給状況】地区別集計

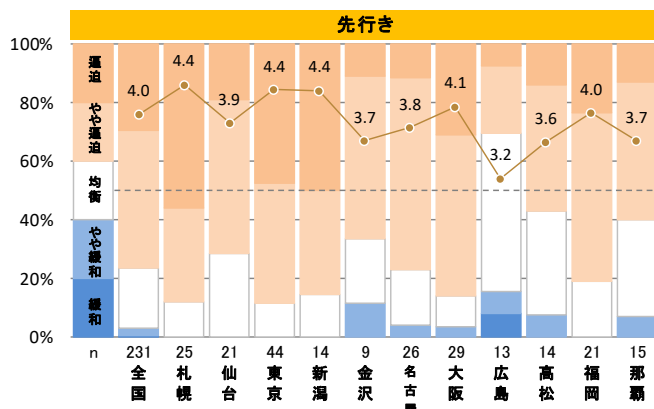
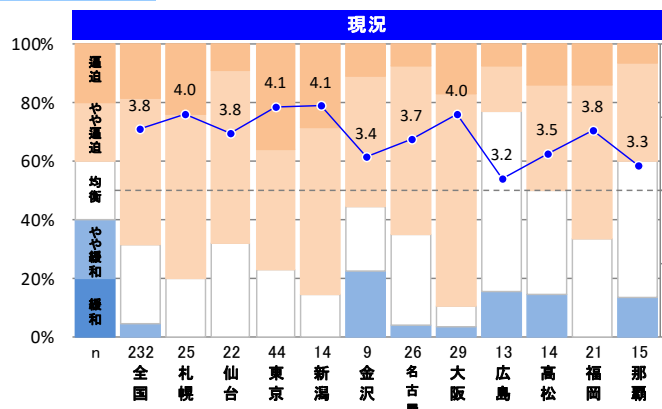
コンクリート工事(打設手間)



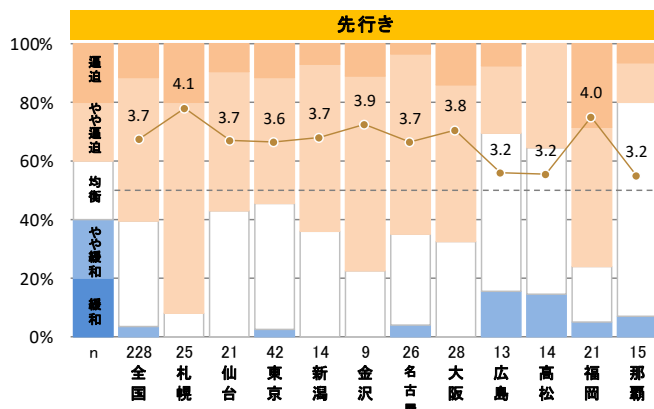
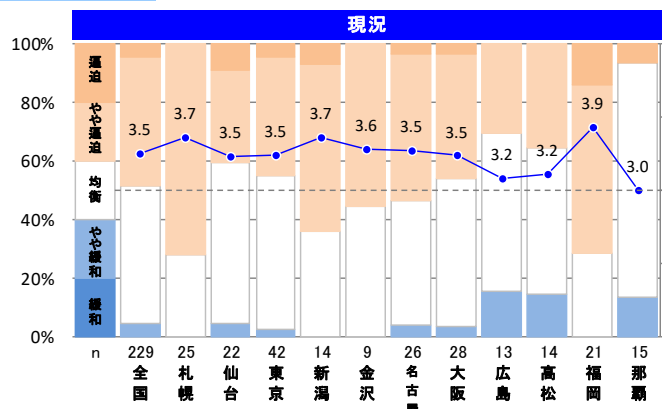
コンクリート工事(ポンプ圧送)



型枠工事

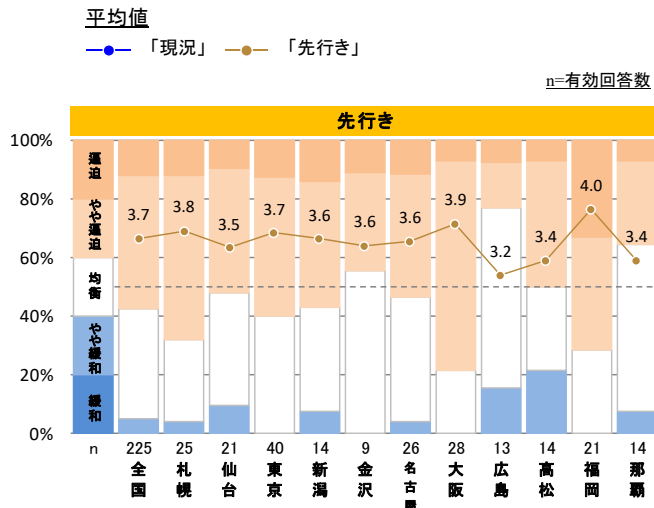
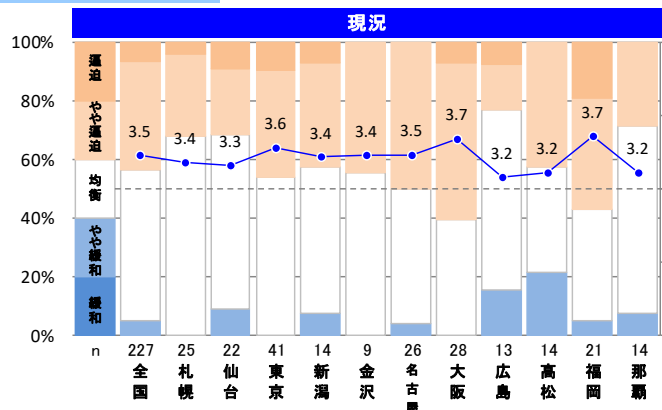


鉄骨工事

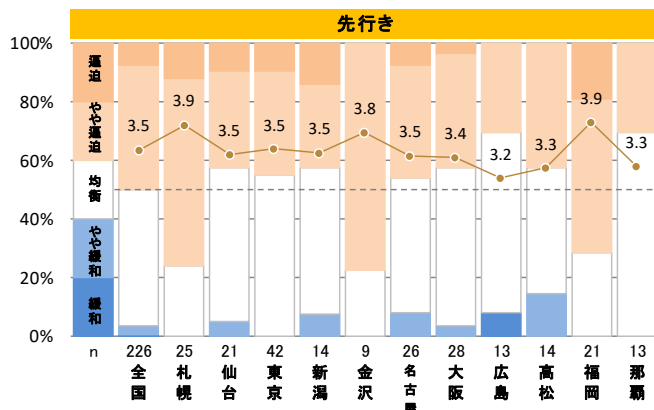
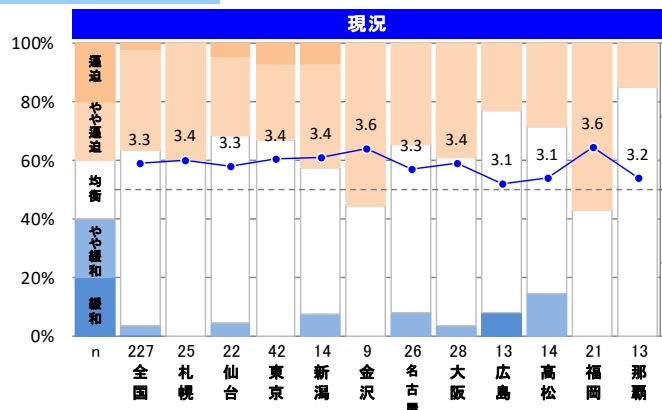


【工種別労務需給状況】地区別集計

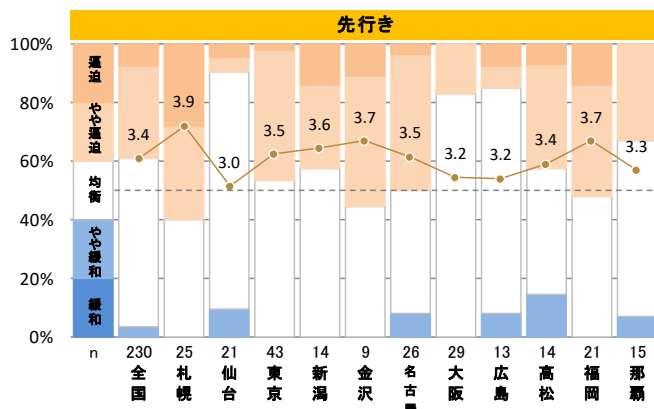
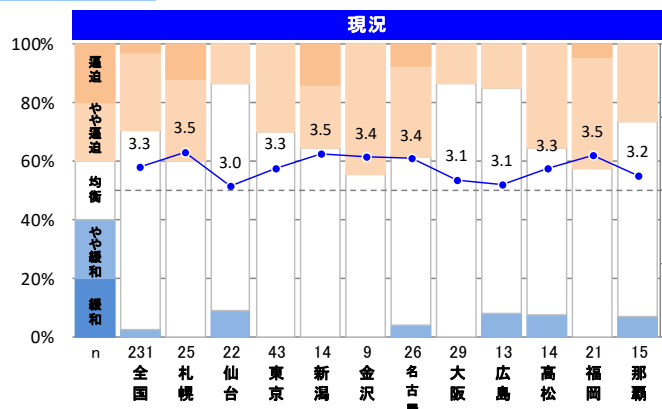
耐火被覆工事



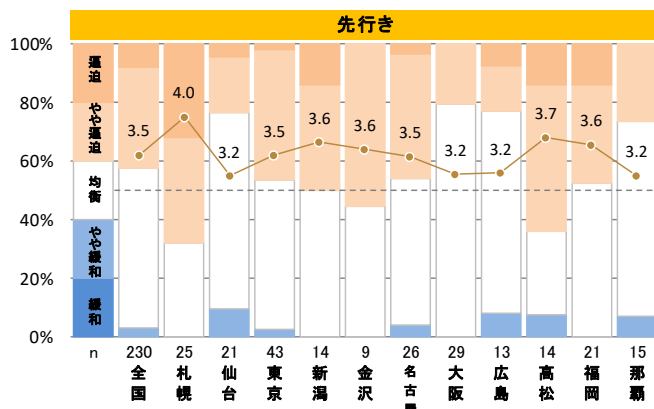
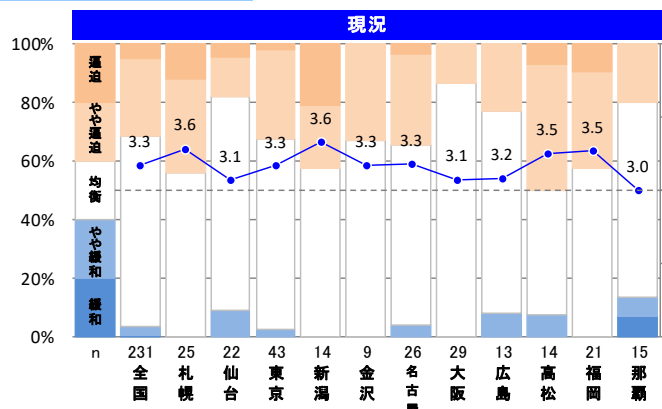
ALC・ECP工事



防水工事

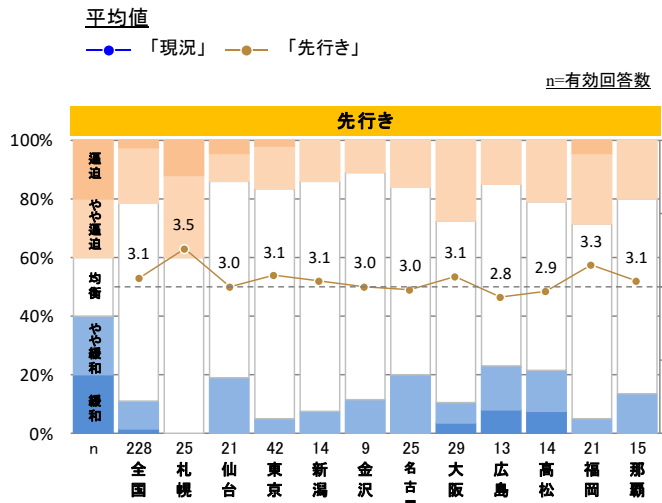
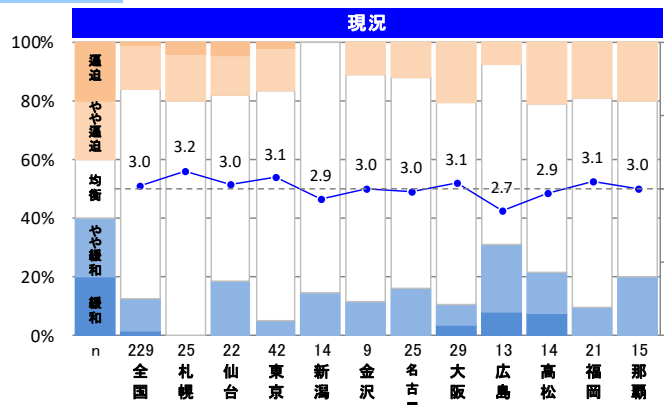


シーリング工事

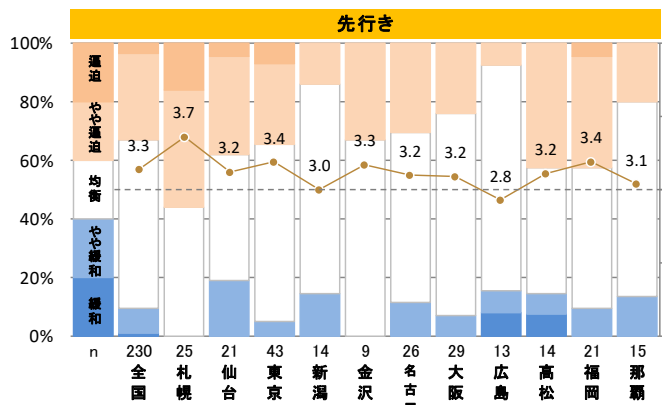
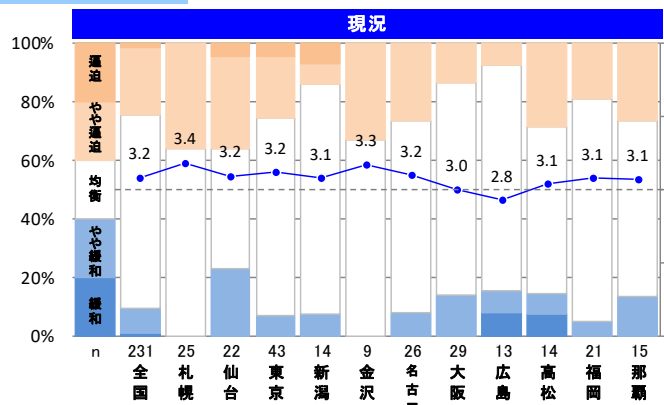


【工種別労務需給状況】地区別集計

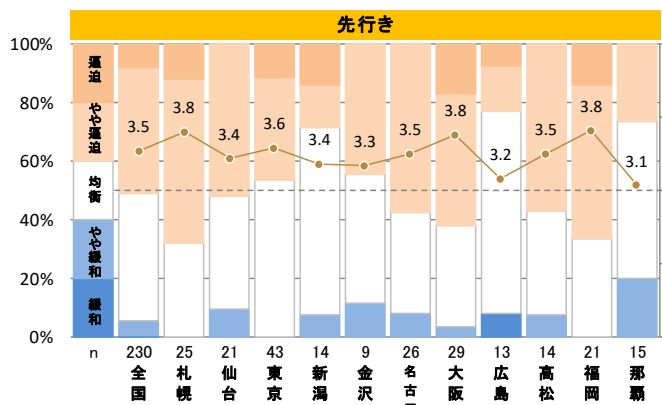
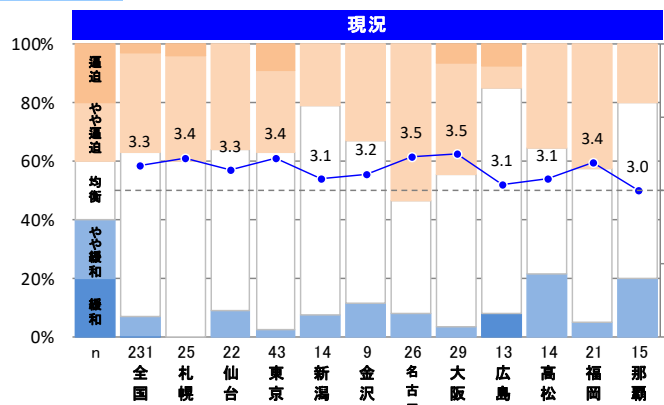
石工事



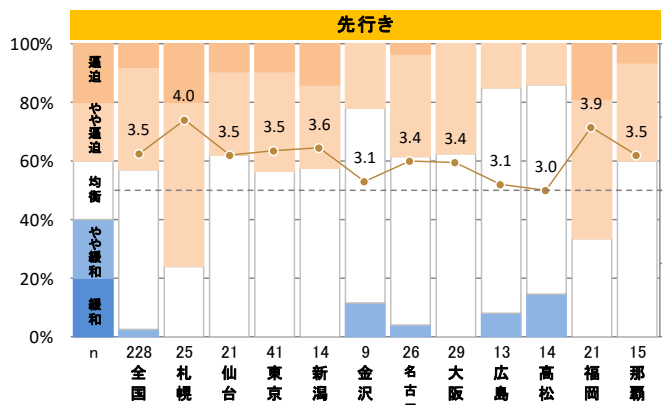
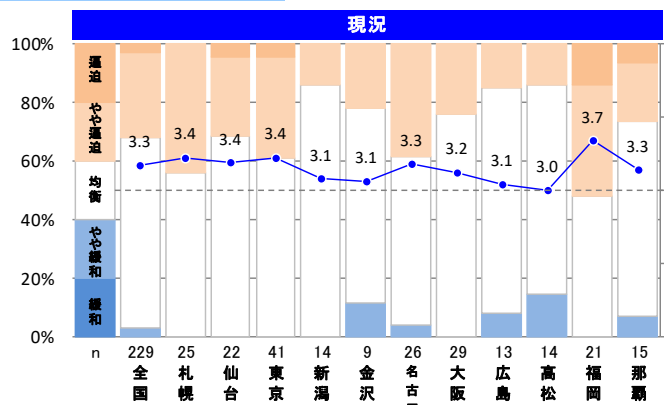
タイル工事



木工事

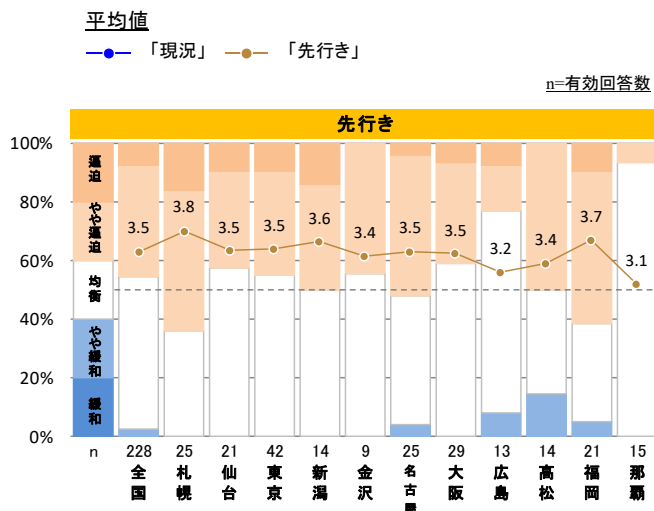
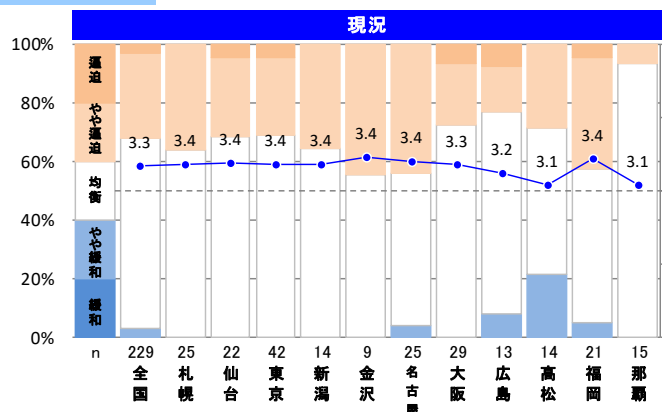


屋根及びとい工事

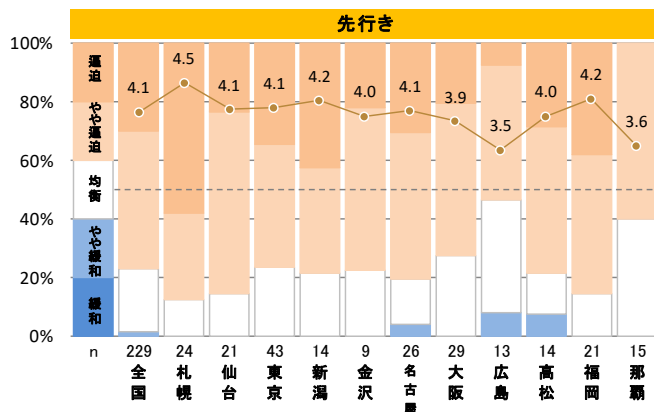
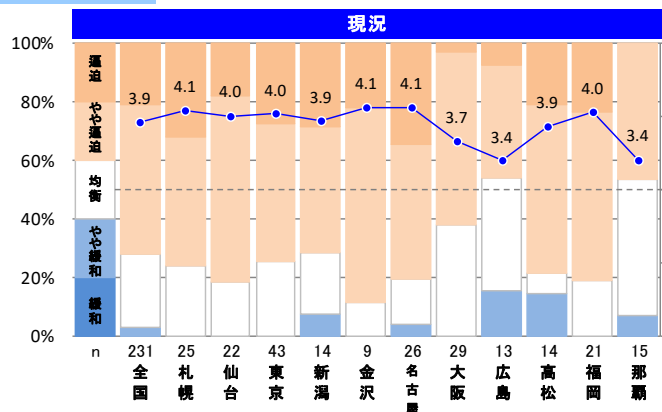


【工種別労務需給状況】地区別集計

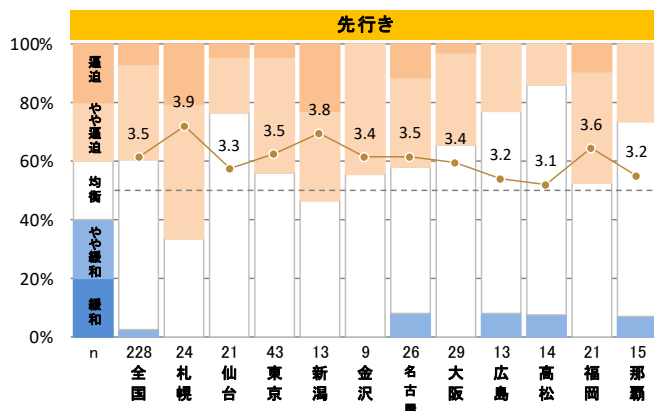
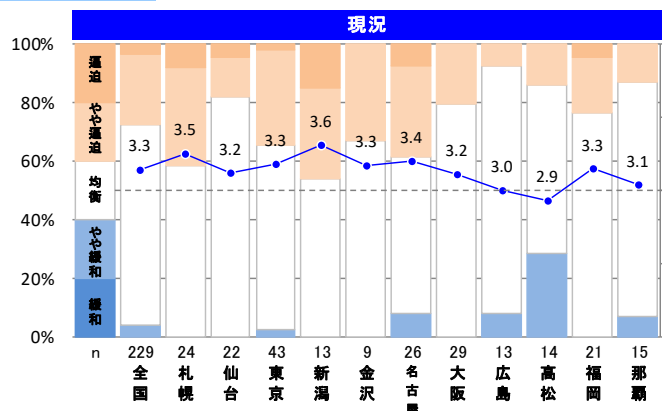
金属工事



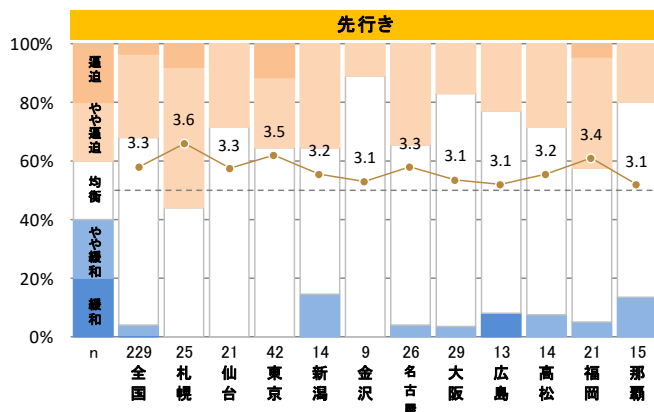
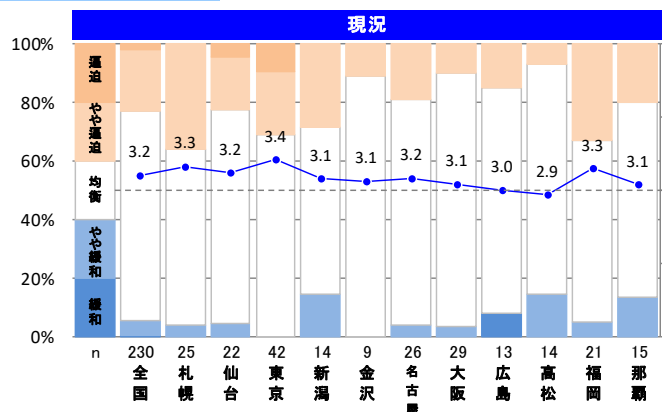
左官工事



吹付工事

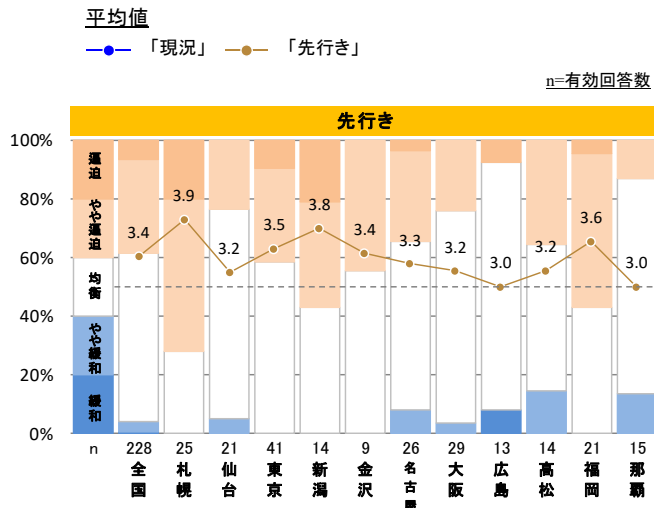
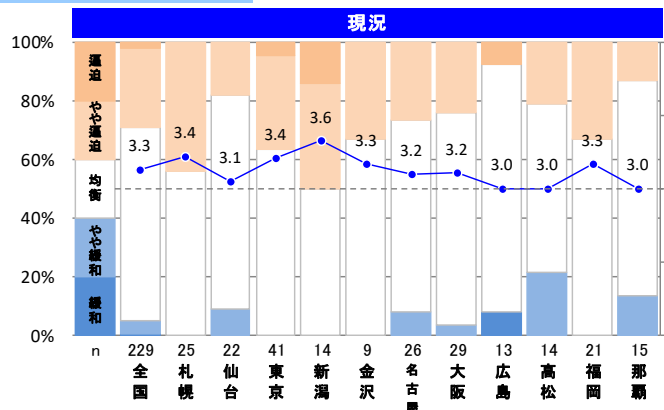


木製建具工事

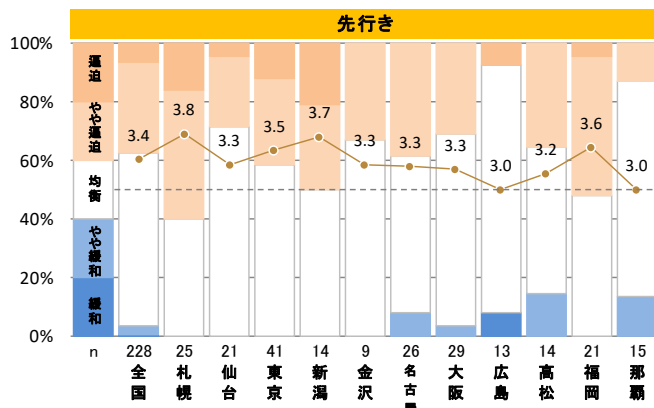
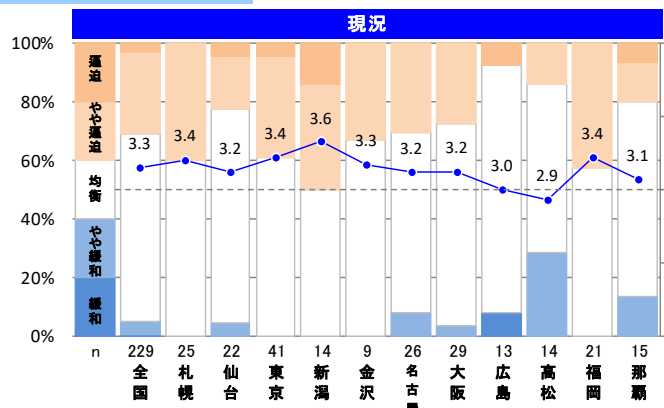


【工種別労務需給状況】地区別集計

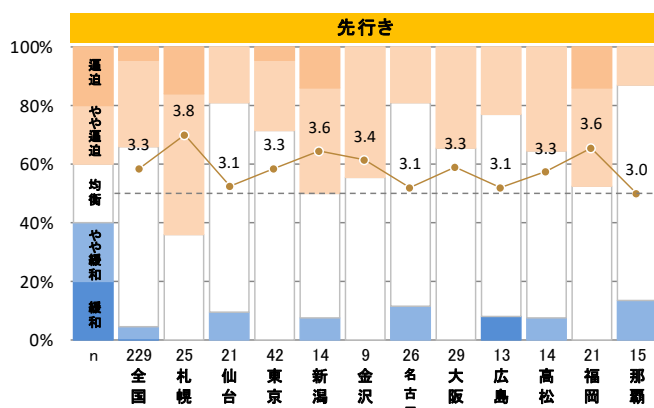
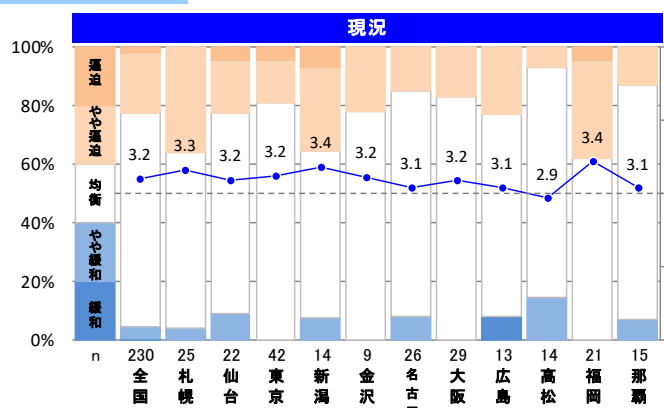
金属製建具工事



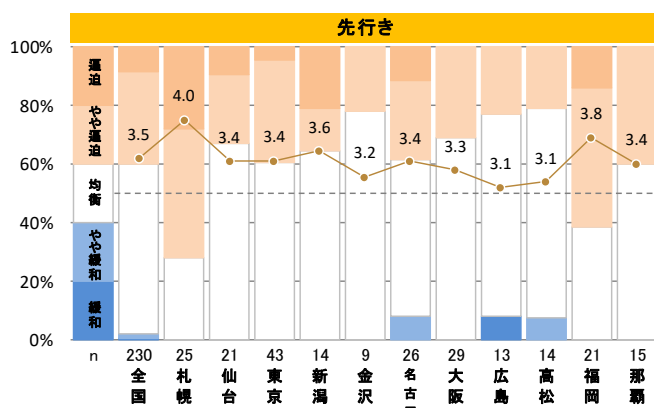
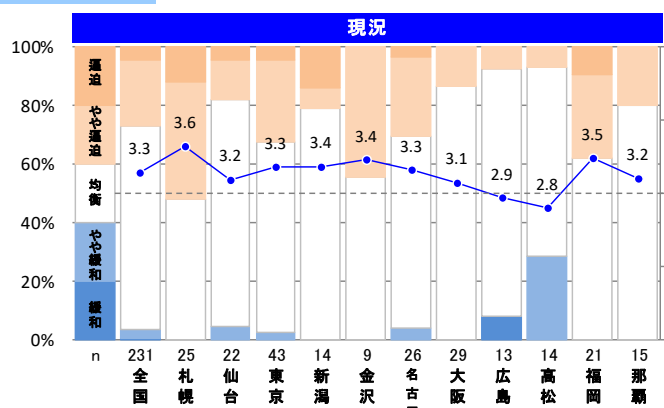
シャッター工事



ガラス工事

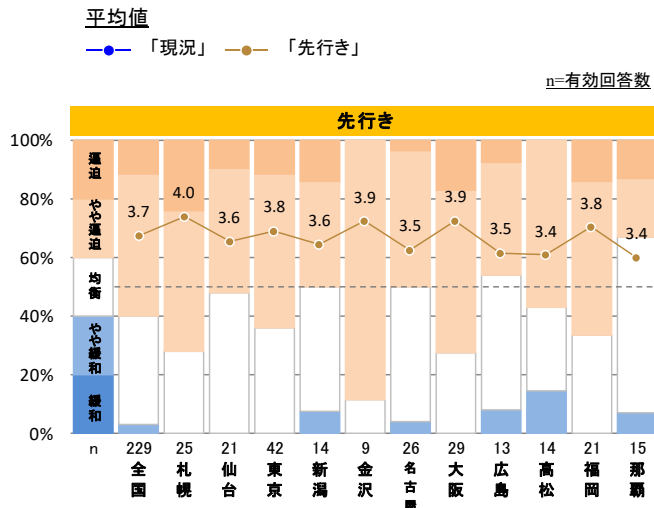
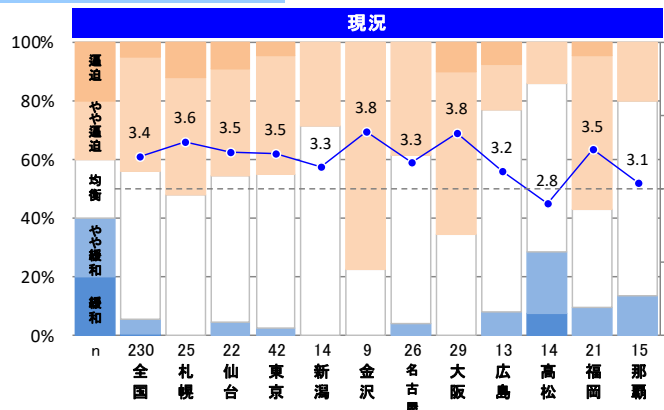


塗装工事

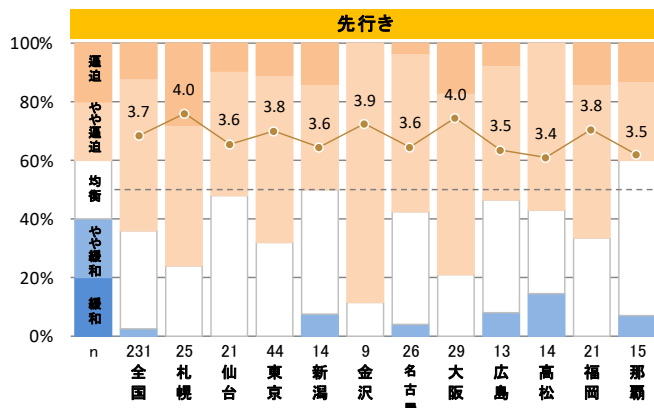
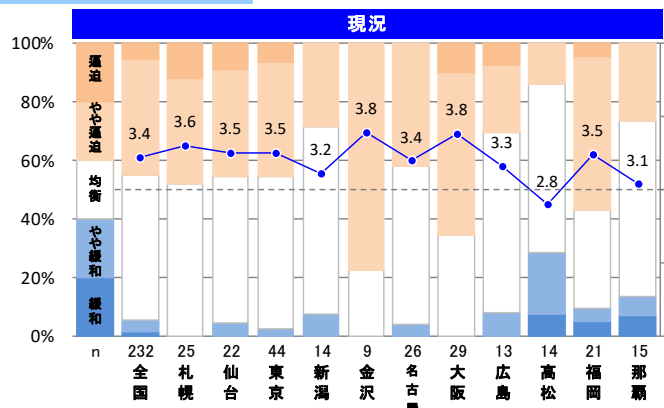


【工種別労務需給状況】地区別集計

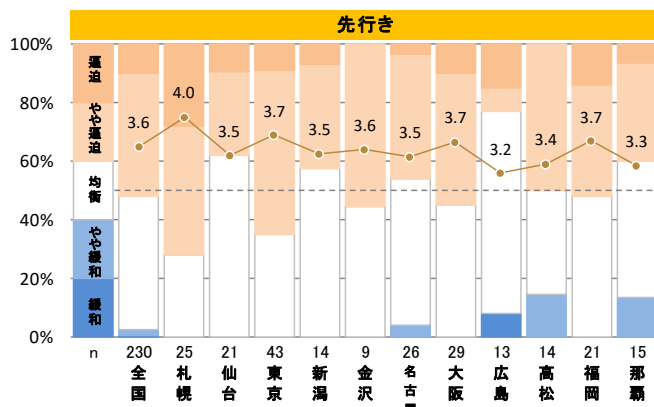
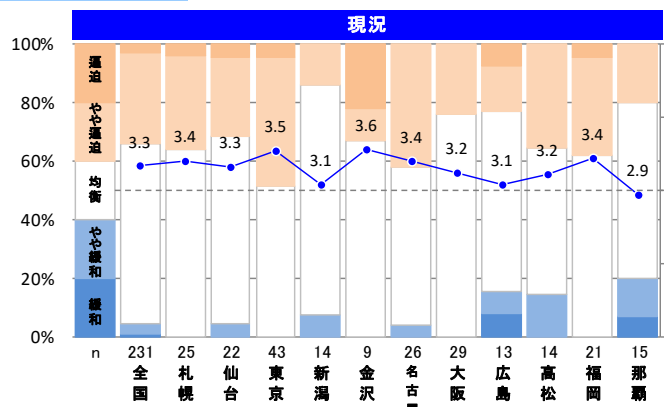
軽量鉄骨下地工事



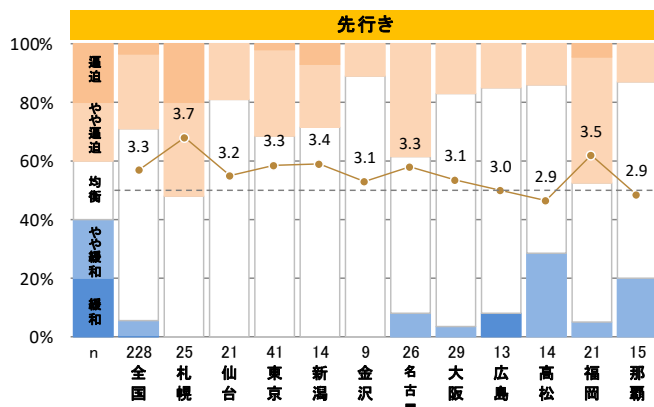
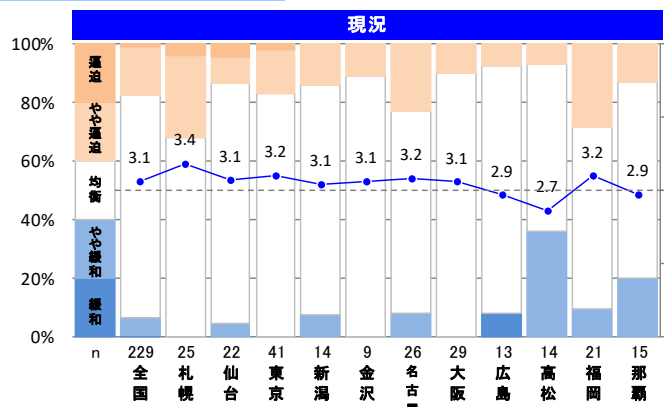
内装ボード工事



内装床工事

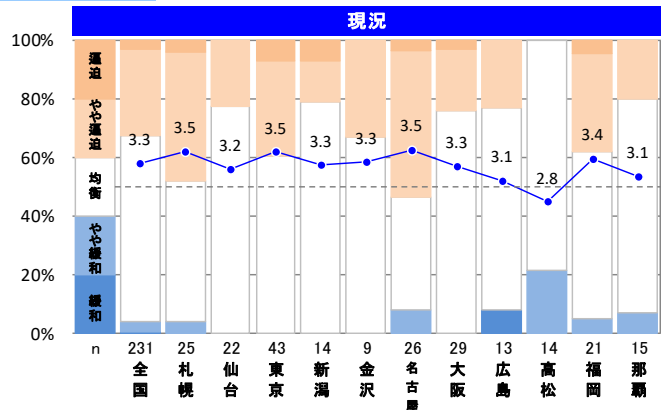


仕上ユニット工事



【工種別労務需給状況】地区別集計

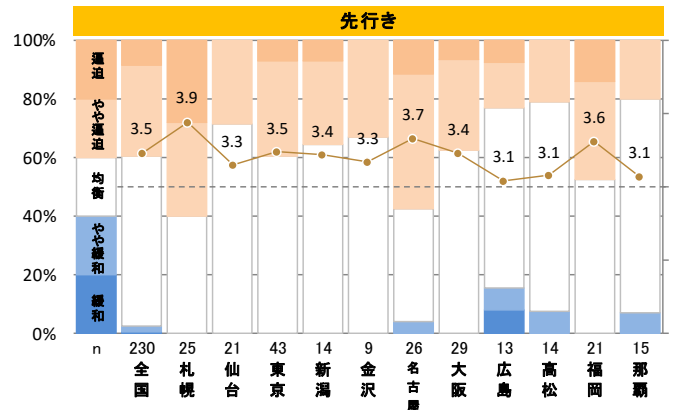
外構工事



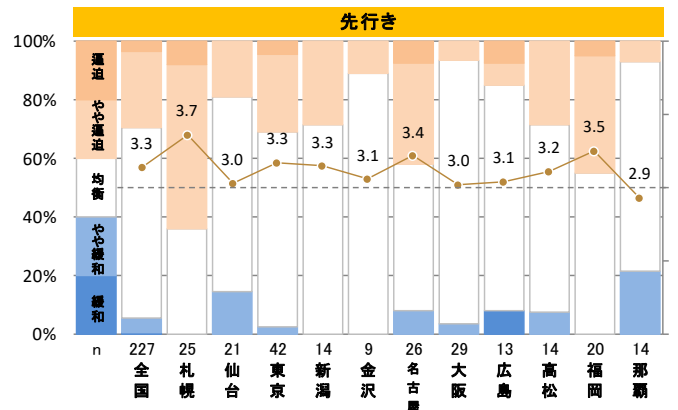
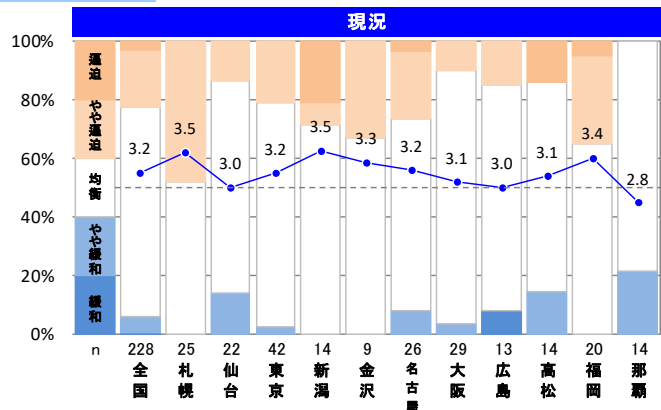
平均値

● 「現況」 ● 「先行き」

n=有効回答数



解体工事



都市別の詳細および過去の調査結果については、当会HP『けんせつPlaza』をご覧ください。

公共工事に最適な資料・工法の電子カタログ資料館

NETIS登録技術をはじめとした、公共工事に最適な資材・工法を解説したカタログ集です。



国内に多数の工事実績を持つ資材・工法を集成!  
スピーディな検索&カンタン資料請求!  
データベース以外のコンテンツも充実!



http://www.kensetsu-plaza.com/

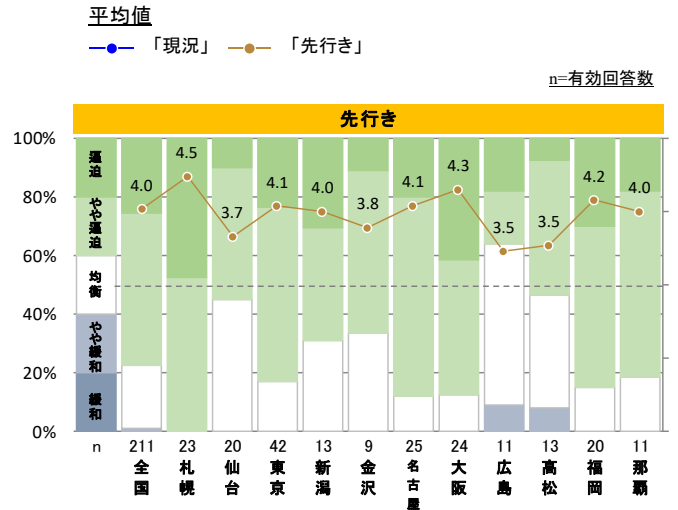
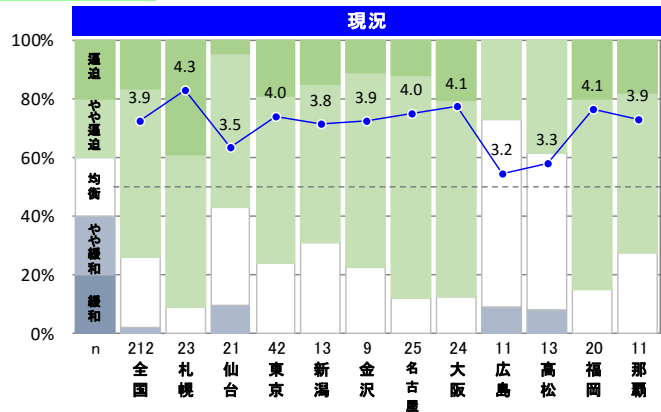
けんせつPlaza



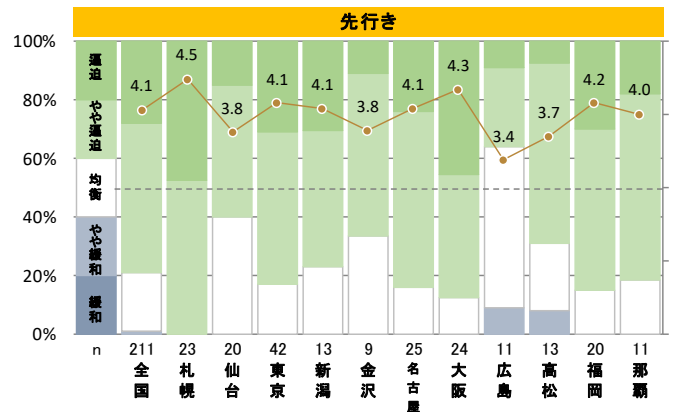
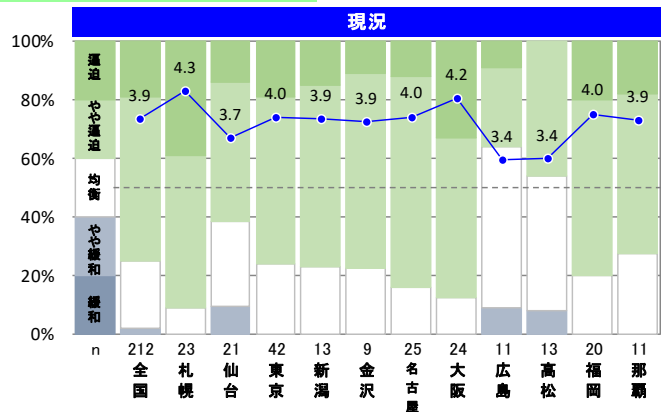


【工種別労務需給状況】地区別集計

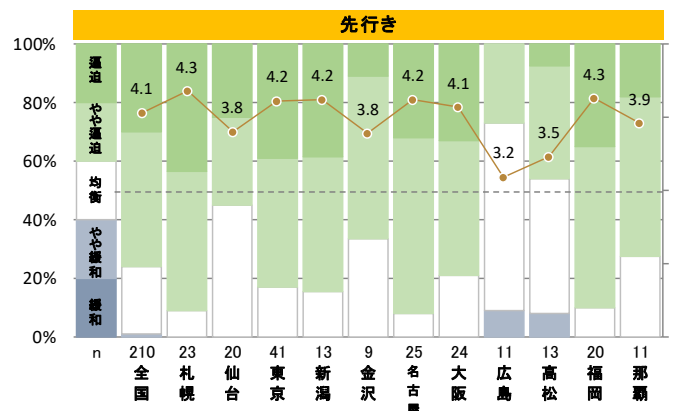
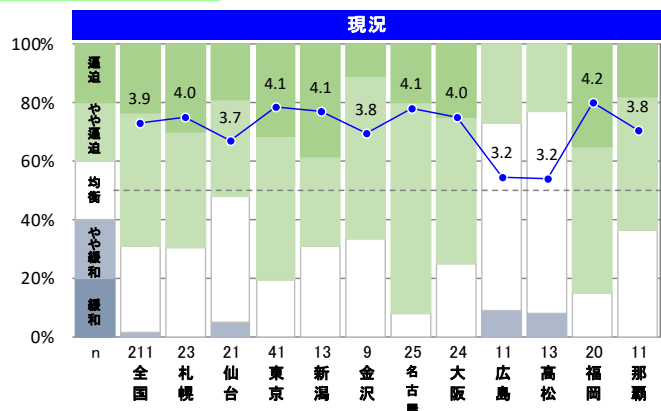
配管工事



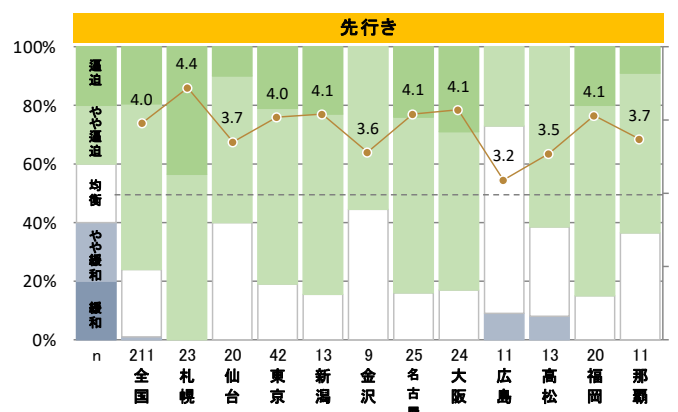
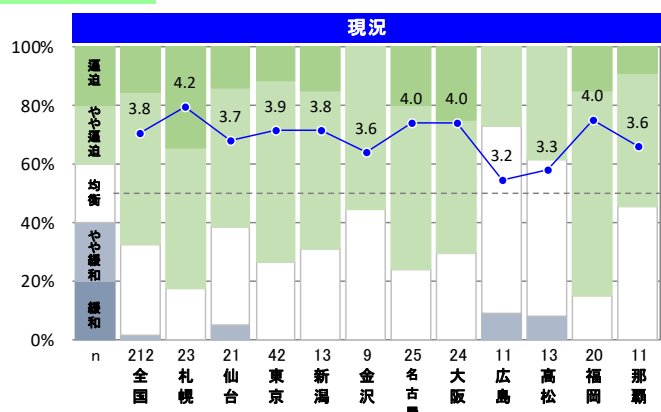
給排水衛生設備工事



消火設備工事

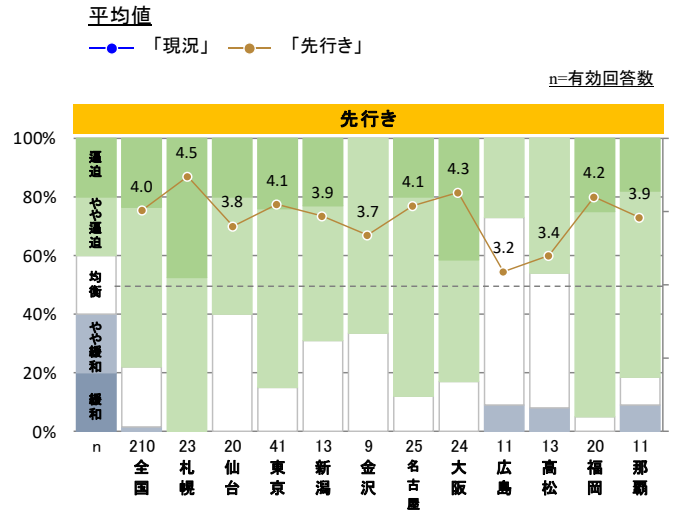
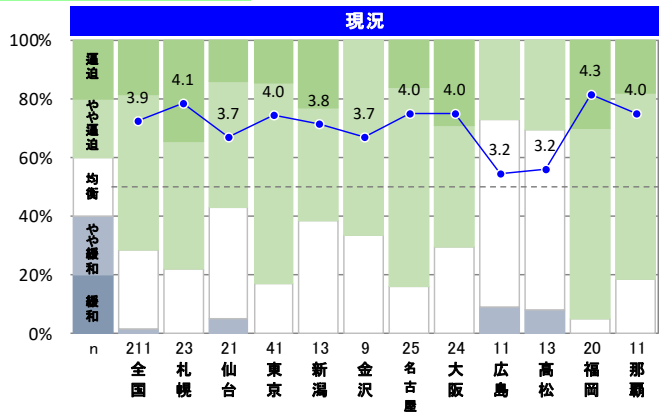


保温工事

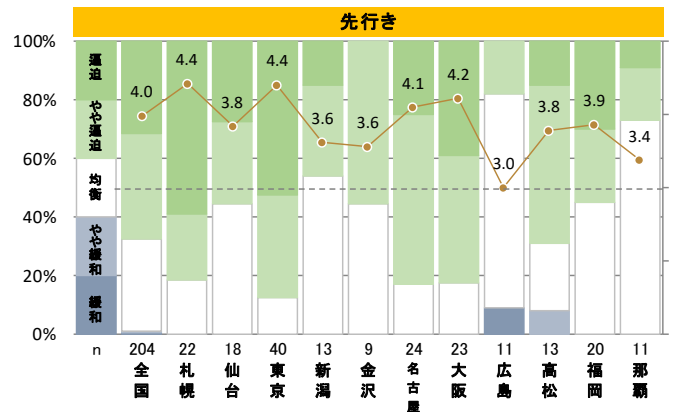
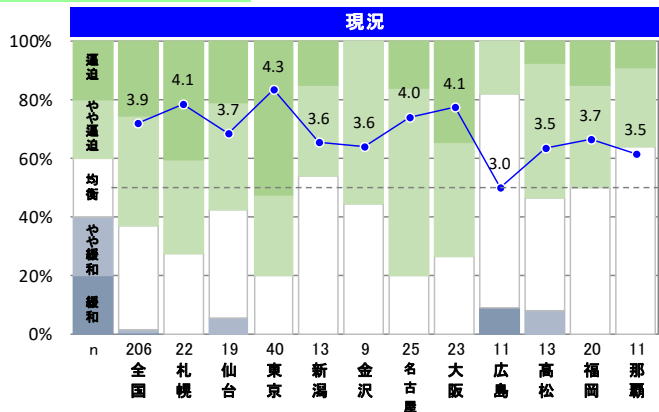


【工種別労務需給状況】地区別集計

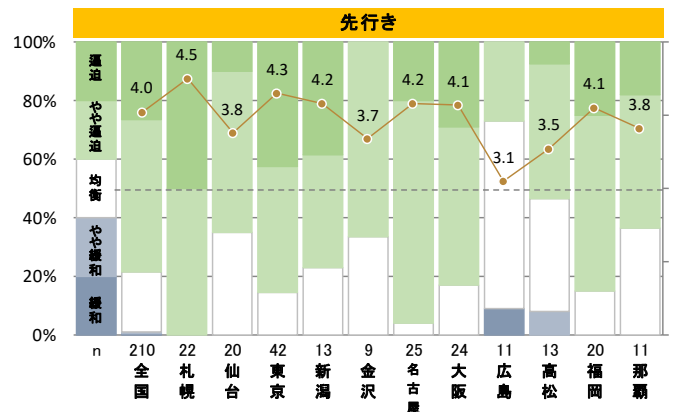
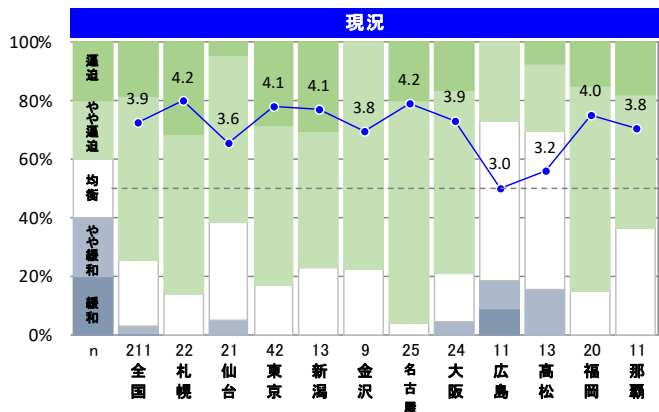
ダクト設備工事



昇降機設備工事



電気設備工事



通信・情報設備工事

